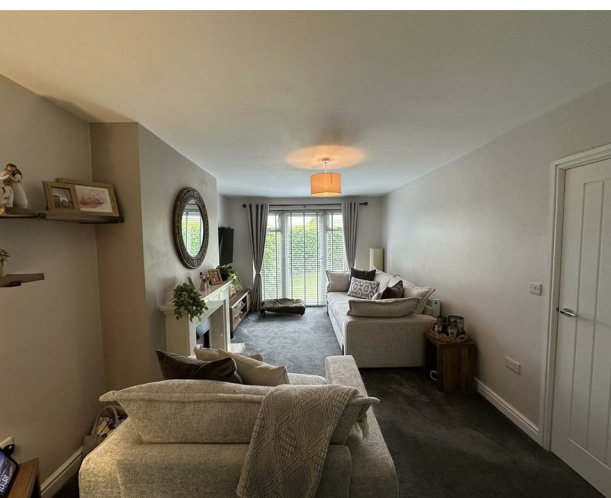


Wheathead Drive, Keighley, Keighley, Yorkshire, BD22  
6LH  
£250,000





# Wheathead Drive, Keighley, Keighley, Yorkshire, BD22 6LH

£250,000

Council Tax Band: C

Situated in a generous plot on the sought-after area of Wheathead Drive in Keighley, this exceptionally presented semi-detached house offers a perfect blend of comfort and style. Boasting four spacious bedrooms, this property is ideal for families. The well-designed layout includes a welcoming reception room, perfect for entertaining guests or enjoying quiet evenings at home.

The modern bathrooms provide convenience and privacy, ensuring that the needs of a busy household are met with ease. The property has been meticulously maintained, showcasing a high standard of finish throughout, making it ready for you to move in without the need for any immediate renovations.

Situated in a popular location, this home benefits from easy access to local amenities, schools, and transport links, making it an excellent choice for both families and professionals alike. With its attractive features and prime location, this semi-detached house on Wheathead Drive is a wonderful opportunity for anyone looking to settle in a vibrant community. Don't miss the chance to make this beautiful property your new home.

This property briefly comprises of:

## Lounge

Lounge including gas central heating and uPVC double glazed window overlooking the front elevation, with a patio door leading to the front garden.

## Front Garden

Front garden with lawn area and surrounding patio.

## Dining Room

Dining room including gas central heating and uPVC double glazed window overlooking the rear elevation.

## Cloakroom

Downstairs W/C with sink.

## Kitchen

Kitchen with matching wall and base units, gas central heating and uPVC double glazed windows overlooking the front elevation.

## Bedroom 1

Bedroom including gas central heating, fitted wardrobes and uPVC double glazed window overlooking the front elevation.

## Bedroom 2

Bedroom including gas central heating and uPVC double glazed window overlooking the front elevation.

## Bedroom 3

Bedroom including gas central heating and uPVC double glazed window overlooking the front elevation.

## Bedroom 4

Bedroom including gas central heating and uPVC double glazed window overlooking the front elevation.

## Bathroom

Bathroom including gas central heated towel rail and skylight.

## Garden

Low maintenance garden to the rear.

## Garage

Garage with ample parking and electric shutter door - room to the rear with potential for utility.















**Keighley**

